



Certificate of Analysis

Customer:

Poplar Creek Farms
11166 S NC 9 HWY
Columbus, NC 28722

Sample ID: **210913022**

Order Number: **CB210913006**

Sample Name: **Grape 9-9-21**

Collected Date: **9/9/2021**

Received Date: **9/14/2021**

COA Released: **9/15/2021**

External Sample ID:

Batch Number:

Product Type: **Edible**

Sample Type: **Edible**

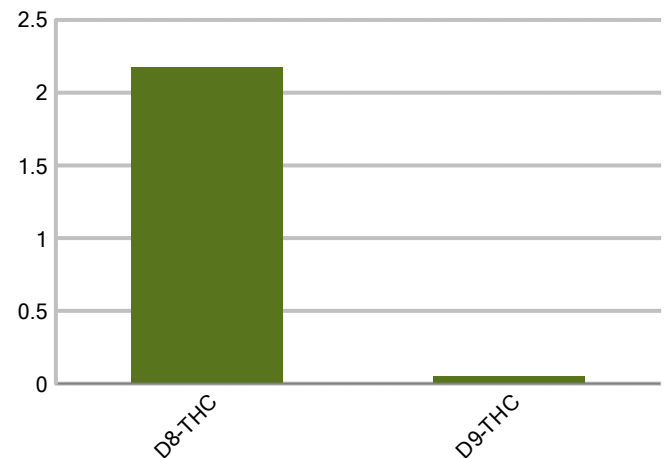
Comments:

CANNABINOID PROFILE (Product Size = 1.05 g)

Analyte	LOQ (%)	% weight	mg/g	mg/serving
CBC	0.01	ND	ND	ND
CBD	0.01	ND	ND	ND
CBDa	0.01	ND	ND	ND
CBDV	0.01	ND	ND	ND
CBG	0.01	ND	ND	ND
CBGa	0.01	ND	ND	ND
CBN	0.01	ND	ND	ND
d8-THC	0.01	2.176	21.76	22.85
d9-THC	0.01	0.054	0.543	0.57
THCa	0.01	ND	ND	ND
Total Cannabinoids		2.231	22.31	23.43
Total Potential THC		0.054	0.543	0.57
Total Potential CBD		N/A	N/A	ND
Total Potential CBG		N/A	N/A	ND



Cannabinoids (% weight)



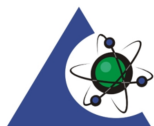
Ratio of Total Potential CBD to Total Potential THC N/A

Ratio of Total Potential CBG to Total Potential THC N/A

*Total Cannabinoids refers to the sum of all cannabinoids detected.

*Total Potential CBD = (0.877 x CBDa) + CBD. *Total Potential THC = (0.877 x THCa) + THC. *Total Potential CBG = (0.877 x CBGa) + CBG.

*Total Potential THC/CBD are calculated to take into account the loss of an acid group during decarboxylation.



PJLA
Testing
Accreditation #109588

Authorized Signature

Laboratory Manager

Jamie Hobgood

09/15/2021 9:25 AM

DATE

This product has been tested by CannaBusiness Laboratories using validated testing methodologies and a quality system. Values reported relate only to the product tested. CannaBusiness Laboratories makes no claims as to the efficacy, safety or other risks associated with any detected or non-detected levels of any compounds reported herein. This Certificate shall not be reproduced except in full, without the written permission of CannaBusiness Laboratories. Uncertainty information is available on request. Photo is of sample received by the lab and may vary from final packaging. The results apply to the sample as received. ISO/IEC 17025:2017 Accredited.



Sample ID: 210913022
Sample Name: Grape 9-9-21
Sample Type: Edible

Certificate of Analysis

Customer

Poplar Creek Farms
11166 S NC 9 HWY
Columbus, NC 28722



Overall Batch Results	
Pesticide	Moisture Content
Potency	Water Activity
Mycotoxins	Heavy Metals
Microbial Screen	Residual Solvents
Terpenoids	

Sample Name: Grape 9-9-21
Sample ID: 210913022
Product Type: Edible
Sample Type: Edible
Collected Date: 09/09/2021
Received Date: 09/14/2021
Batch Number:
Batch Size:
Sample Size:
COA released: 09/15/2021 9:25 AM

Potency (mg/g)			
Date Tested: 09/14/2021		Method: CB-SOP-028	
Instrument:			
0.054 % Total THC	0.000 % Total CBD	2.231 % Total Cannabinoids	22.31 mg/g Total Cannabinoids

Analyte	Result	Units	LOQ	Result	Units
CBC (Cannabichromene)	ND	%	0.010	ND	mg/g
CBD (Cannabidiol)	ND	%	0.010	ND	mg/g
CBDa (Cannabidiolic Acid)	ND	%	0.010	ND	mg/g
CBDV (Cannabidivarin)	ND	%	0.010	ND	mg/g
CBG (Cannabigerol)	ND	%	0.010	ND	mg/g
CBGa (Cannabigerolic Acid)	ND	%	0.010	ND	mg/g
CBN (Cannabinol)	ND	%	0.010	ND	mg/g
D8-THC (D8-Tetrahydrocannabinol)	2.176	%	0.010	21.76	mg/g
D9-THC (D9-Tetrahydrocannabinol)	0.054	%	0.010	0.543	mg/g
THCa (Tetrahydrocannabinolic Acid)	ND	%	0.010	ND	mg/g



Authorized Signature

Laboratory Manager

Jamie Hobgood

09/15/2021 9:25 AM

Date Time

NT = Not tested, ND = Not detected; LOQ = Limit of Quantitation; <LOQ = Detected; >ULOL = Above upper limit of linearity; CFU/g = Colony forming units per 1 gram; TNTC = Too numerous to count

CannaBusiness Laboratories
License # P-0059: (859)-514- 6999 <https://www.cannabusinesslabs.us>

This product has been tested by CannaBusiness Laboratories using validated testing methodologies and a quality system. Values reported relate only to the product tested. CannaBusiness Laboratories makes no claims as to the efficacy, safety, or other risks associated with any detected or non-detected levels of any compounds reported herein. This Certificate shall not be reproduced except in full, without the written permission of CannaBusiness Laboratories. Uncertainty information is available on request. Photo is of sample received by the lab and may vary from final packaging. The results apply to the sample as received. ISO/IEC 17025:2017 Accredited.